



UL Verification Services Inc.
7036 Snowdrift Road
Allentown, PA 18106
610-774-1300



Indoor Distribution Test Report

Relevant Standards
IES LM-79-2008, ANSI C82.77-10-2014

Prepared For
Vokslyte
8020 Queenair Dr
Gaithersburg, MD 20879-4173
United States

Catalog Number
Tangent UP/Down HO 3000K

Order Number
14346055
Test Number
14346055.02

Test Date
2022-06-09

Prepared By

Josh Mitchell, Technician

Approved By

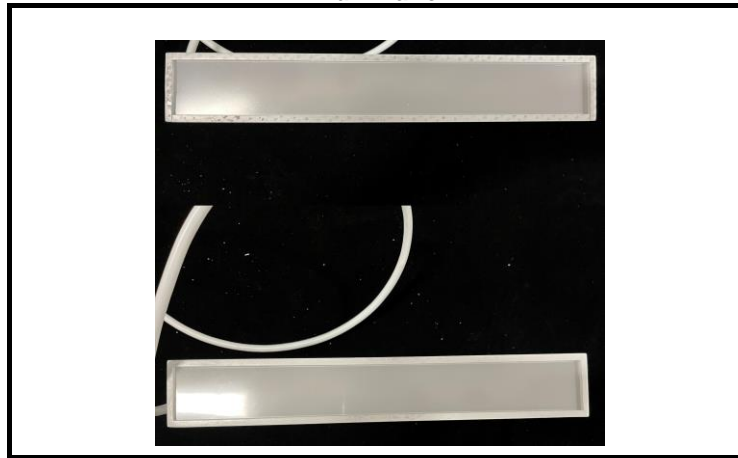
Shivani Vyas, Engineering Project Handler

The results contained in this report pertain only to the tested sample.
This report shall not be reproduced, except in full, without written approval of Underwriters Laboratories.
This report must not be used by the client to claim product certification, approval, or endorsement by
NVLAP, NIST, or any agency of the Federal Government.



Luminaire Description: Cast aluminum housing, frosted lens enclosure
Lamp: Total 72 LEDs 36 up and downlight white LEDs
Mounting: Pendant

Luminaire



Luminaire Characteristics

Luminous Length: 12.00 in.
Luminous Width: 2.000 in.
Luminous Height: 7.75 in.

Summary of Results

Total Luminaire Output: 1093 Lumens
Luminaire Efficacy: 66.3 lm/w
Maximum Candela: 257 Candela

Test Conditions

Test Temperature: 25.0 °C
Voltage: 120.0 VAC
Current: 0.1385 A
Power: 16.49 W
Power Factor: 0.993
Frequency: 60 Hz
Current THD: 5.44 %

Laboratory results may not be representative of field performance
Ballast factors have not been applied



Distribution - Goniophotometer

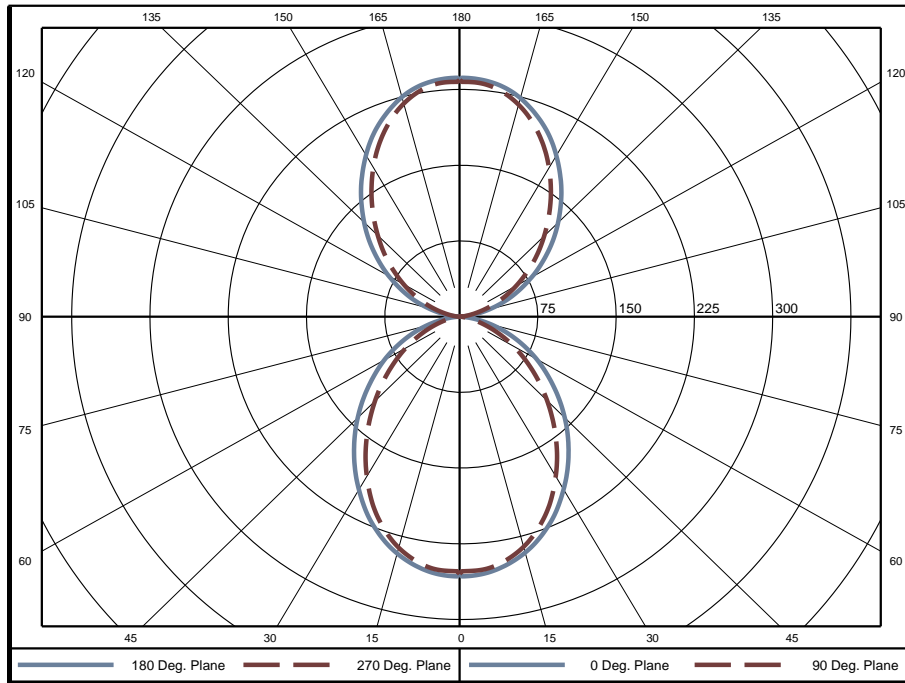
Distribution Test Conditions

Temperature	Voltage	Current	Power	Power Factor	Frequency	Current THD
25.0 °C	120.0 VAC	0.1385 A	16.49 W	0.993	60 Hz	5.44 %

Summary of Results

Spacing Criteria	Total Lumen Output:	1093 Lumens
0-180: 1.16	Luminaire Efficacy:	66.3 lm/w
90-270: 1.09	Maximum Candela:	257 Candela
Corrected UGR (Room Dimension: X=4H, Y=8H, Reflectances: 70/50/20%, S/H: 1)	Endwise:	11.9
Crosswise: 11.9		

Polar Plot



Zonal Lumen Summary

Zone	Lumens	% of Luminaire	Zone	Lumens	% of Luminaire	Zone	Lumens	% of Luminaire
0-5	6.08	0.6%	60-65	30.79	2.8%	120-125	36.69	3.4%
5-10	17.98	1.6%	65-70	23.44	2.1%	125-130	41.99	3.8%
10-15	28.92	2.6%	70-75	16.00	1.5%	130-135	46.07	4.2%
15-20	38.31	3.5%	75-80	9.22	0.8%	135-140	48.75	4.5%
20-25	45.65	4.2%	80-85	3.99	0.4%	140-145	49.99	4.6%
25-30	50.58	4.6%	85-90	1.07	0.1%	145-150	49.42	4.5%
30-35	53.19	4.9%	90-95	1.10	0.1%	150-155	46.87	4.3%
35-40	53.48	4.9%	95-100	4.42	0.4%	155-160	42.17	3.9%
40-45	51.77	4.7%	100-105	10.03	0.9%	160-165	35.35	3.2%
45-50	48.29	4.4%	105-110	16.83	1.5%	165-170	26.71	2.4%
50-55	43.40	4.0%	110-115	23.91	2.2%	170-175	16.58	1.5%
55-60	37.56	3.4%	115-120	30.57	2.8%	175-180	5.60	0.5%

Zone	Lumens	% of Luminaire
0-40	294	26.9%
0-60	475	43.5%
0-90	560	51.2%
90-180	533	48.8%



Candela Tabulation
Horizontal Angle (Degrees)

	0	22.5	45	67.5	90	112.5	135	157.5	180	202.5	225	247.5	270	292.5	315	337.5
0	254.9	254.9	254.9	254.9	254.9	254.9	254.9	254.9	254.9	254.9	254.9	254.9	254.9	254.9	254.9	254.9
5	255.8	255.3	253.5	252.6	251.6	252.6	253.5	255.3	255.8	255.3	253.5	252.6	251.6	252.6	253.5	255.3
10	250.3	250.3	248.3	247.0	245.9	247.0	248.3	250.3	250.3	250.3	248.3	247.0	245.9	247.0	248.3	250.3
15	241.6	241.8	238.7	236.9	235.8	236.9	238.7	241.8	241.6	241.8	238.7	236.9	235.8	236.9	238.7	241.8
20	229.5	229.6	225.4	222.6	221.3	222.6	225.4	229.6	229.5	229.6	225.4	222.6	221.3	222.6	225.4	229.6
25	214.6	214.4	209.1	205.2	203.5	205.2	209.1	214.4	214.6	214.4	209.1	205.2	203.5	205.2	209.1	214.4
30	197.1	196.8	190.4	185.2	182.7	185.2	190.4	196.8	197.1	196.8	190.4	185.2	182.7	185.2	190.4	196.8
35	178.9	178.0	170.8	164.4	161.2	164.4	170.8	178.0	178.9	178.0	170.8	164.4	161.2	164.4	170.8	178.0
40	159.9	158.0	150.5	142.6	139.1	142.6	150.5	158.0	159.9	158.0	150.5	142.6	139.1	142.6	150.5	158.0
45	140.5	138.8	129.7	121.4	117.6	121.4	129.7	138.8	140.5	138.8	129.7	121.4	117.6	121.4	129.7	138.8
50	121.1	118.9	109.5	100.9	97.2	100.9	109.5	118.9	121.1	118.9	109.5	100.9	97.2	100.9	109.5	118.9
55	102.1	100.0	90.3	81.5	77.9	81.5	90.3	100.0	102.1	100.0	90.3	81.5	77.9	81.5	90.3	100.0
60	84.3	81.7	71.9	63.4	60.2	63.4	71.9	81.7	84.3	81.7	71.9	63.4	60.2	63.4	71.9	81.7
65	66.2	63.4	54.2	46.3	43.5	46.3	54.2	63.4	66.2	63.4	54.2	46.3	43.5	46.3	54.2	63.4
70	49.0	46.1	37.3	30.7	28.7	30.7	37.3	46.1	49.0	46.1	37.3	30.7	28.7	30.7	37.3	46.1
75	32.7	29.6	21.9	17.7	16.6	17.7	21.9	29.6	32.7	29.6	21.9	17.7	16.6	17.7	21.9	29.6
80	17.7	15.0	10.1	8.4	8.0	8.4	10.1	15.0	17.7	15.0	10.1	8.4	8.0	8.4	10.1	15.0
85	6.2	4.4	3.3	3.2	3.3	3.2	3.3	4.4	6.2	4.4	3.3	3.2	3.3	3.2	3.3	4.4
90	0.8	0.8	0.8	0.7	0.7	0.7	0.8	0.8	0.8	0.8	0.8	0.7	0.7	0.7	0.8	0.8
95	5.6	5.2	3.8	3.7	3.5	3.7	3.8	5.2	5.6	5.2	3.8	3.7	3.5	3.7	3.8	5.2
100	16.7	15.5	12.3	10.4	9.8	10.4	12.3	15.5	16.7	15.5	12.3	10.4	9.8	10.4	12.3	15.5
105	30.6	29.2	24.8	21.3	20.0	21.3	24.8	29.2	30.6	29.2	24.8	21.3	20.0	21.3	24.8	29.2
110	46.3	44.4	39.3	34.9	33.2	34.9	39.3	44.4	46.3	44.4	39.3	34.9	33.2	34.9	39.3	44.4
115	62.4	60.5	54.6	49.7	47.8	49.7	54.6	60.5	62.4	60.5	54.6	49.7	47.8	49.7	54.6	60.5
120	79.3	77.1	70.8	65.3	63.1	65.3	70.8	77.1	79.3	77.1	70.8	65.3	63.1	65.3	70.8	77.1
125	96.6	94.4	87.7	81.7	79.2	81.7	87.7	94.4	96.6	94.4	87.7	81.7	79.2	81.7	87.7	94.4
130	114.4	112.2	105.1	98.9	96.5	98.9	105.1	112.2	114.4	112.2	105.1	98.9	96.5	98.9	105.1	112.2
135	131.8	129.6	122.4	116.3	113.9	116.3	122.4	129.6	131.8	129.6	122.4	116.3	113.9	116.3	122.4	129.6
140	149.5	147.3	140.5	134.7	132.4	134.7	140.5	147.3	149.5	147.3	140.5	134.7	132.4	134.7	140.5	147.3
145	166.7	164.9	158.8	153.5	151.3	153.5	158.8	164.9	166.7	164.9	158.8	153.5	151.3	153.5	158.8	164.9
150	183.5	182.1	176.5	172.0	170.0	172.0	176.5	182.1	183.5	182.1	176.5	172.0	170.0	172.0	176.5	182.1
155	199.3	198.1	193.4	189.8	188.0	189.8	193.4	198.1	199.3	198.1	193.4	189.8	188.0	189.8	193.4	198.1
160	212.6	211.9	208.1	205.3	204.0	205.3	208.1	211.9	212.6	211.9	208.1	205.3	204.0	205.3	208.1	211.9
165	223.9	223.4	220.3	218.3	217.2	218.3	220.3	223.4	223.9	223.4	220.3	218.3	217.2	218.3	220.3	223.4
170	231.8	231.3	229.1	227.9	226.9	227.9	229.1	231.3	231.8	231.3	229.1	227.9	226.9	227.9	229.1	231.3
175	235.7	235.1	233.3	232.9	232.1	232.9	233.3	235.1	235.7	235.1	233.3	232.9	232.1	232.9	233.3	235.1
180	234.6	234.6	234.6	234.6	234.6	234.6	234.6	234.6	234.6	234.6	234.6	234.6	234.6	234.6	234.6	234.6

Average Luminance (cd/m²)
Horizontal Angle (Degrees)

	0	45	90
0	16460	16460	16460
45	7796	2824	2204
55	5980	1827	1343
65	4242	1054	714
75	2395	423	268
85	549	64	53

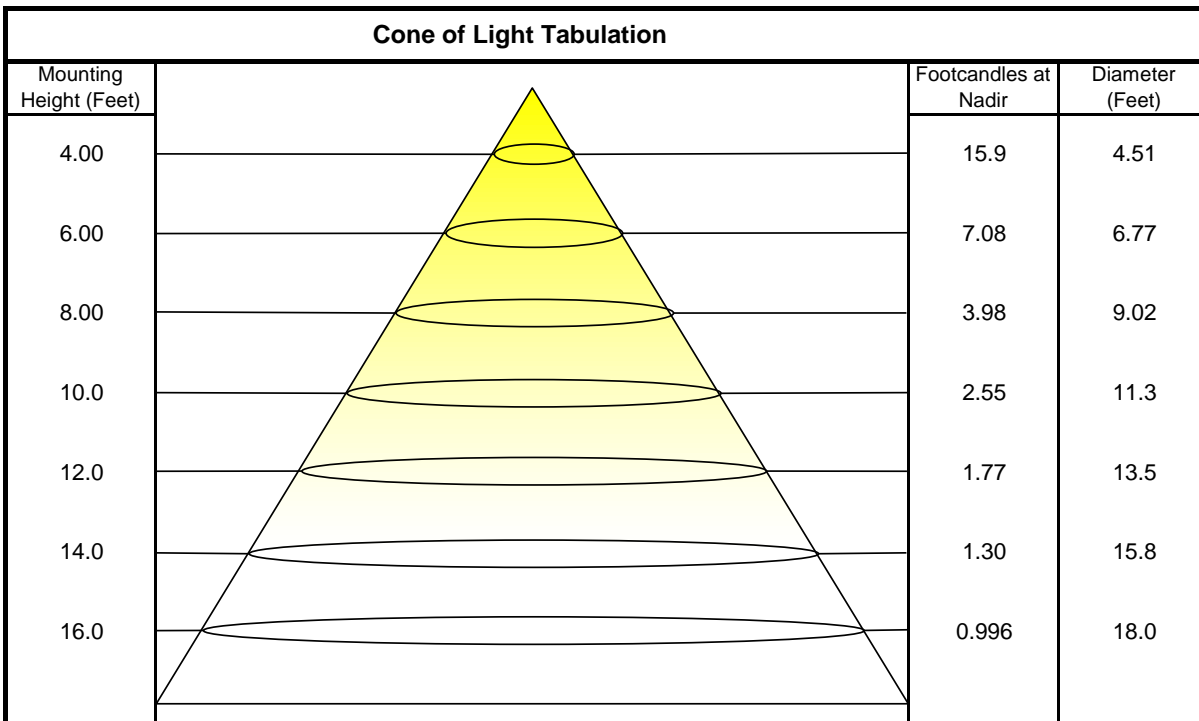


Coefficients of Utilization - Zonal Cavity Method

Effective Floor Cavity Reflectance 20%

Ceiling Cavity Reflectance	80				70				50			30			10			0
Wall Reflectance	70	50	30	10	70	50	30	10	50	30	10	50	30	10	50	30	10	0
Room Cavity Ratio (RCR)	** Values are expressed as percent of total lumen output delivered to the task surface **																	
0	107	107	107	107	99	99	99	99	84	84	84	70	70	70	57	57	57	51
1	99	94	91	87	91	87	84	81	74	72	70	62	61	59	51	50	49	44
2	90	83	77	72	83	77	72	68	66	62	59	55	53	50	46	44	42	38
3	82	73	66	61	76	68	62	57	58	54	50	49	46	43	41	38	36	32
4	76	65	57	52	70	61	54	49	52	47	43	44	40	37	37	34	32	28
5	70	58	50	44	64	54	47	42	47	41	37	40	36	32	33	30	28	25
6	64	52	44	39	59	49	42	37	42	37	33	36	32	29	30	27	25	22
7	59	47	40	34	55	44	37	32	38	33	29	33	29	25	28	25	22	20
8	55	43	36	30	51	40	34	29	35	30	26	30	26	23	26	22	20	18
9	51	39	32	27	48	37	30	26	32	27	23	28	24	21	24	20	18	16
10	48	36	29	24	45	34	28	23	30	25	21	26	22	19	22	19	16	15

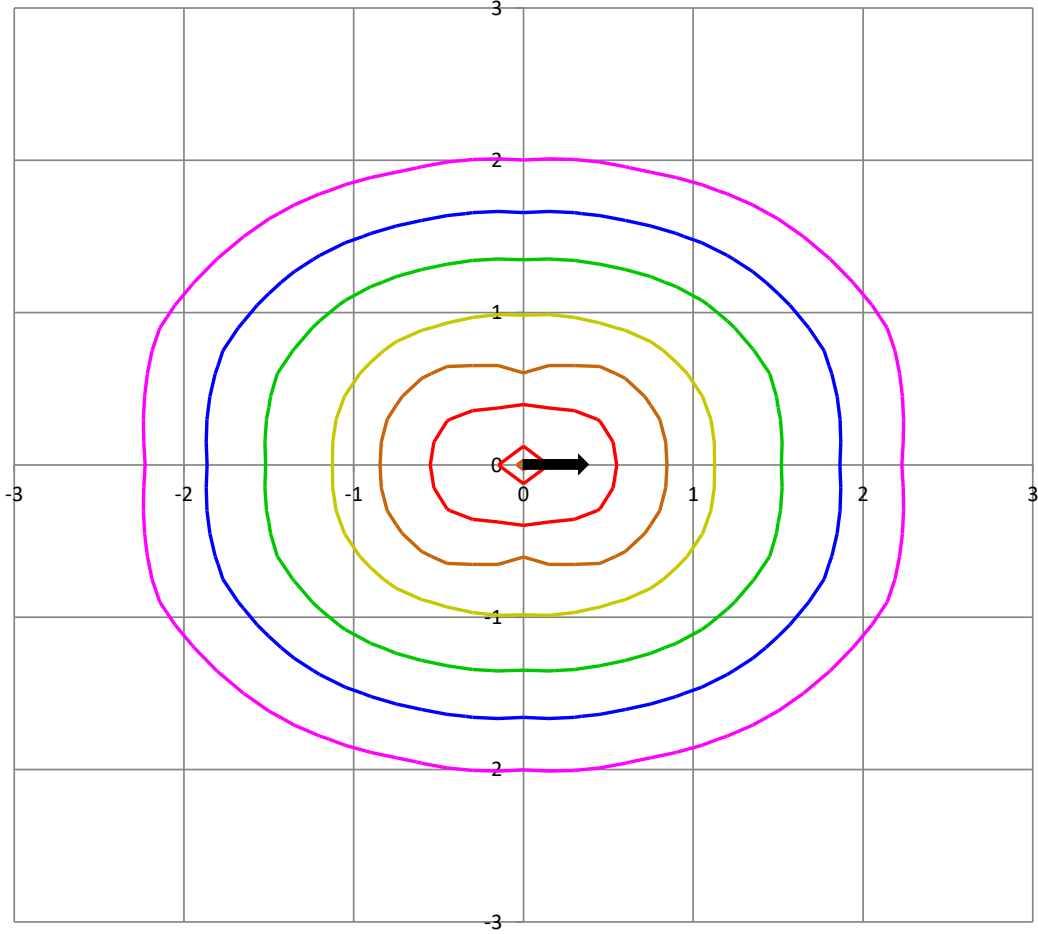
Beam and Field Information	
CIE Type:	Direct/Indirect
Center Beam Intensity:	254.9 Candela
Central Cone Intensity:	255 Candela
Beam Flux:	663.2 Lumens
Beam Angle (0-180):	96.7 Degrees
Beam Angle (90-270):	85.4 Degrees
Field Angle (0-180):	154.6 Degrees
Field Angle (90-270):	142.4 Degrees





ISOFootcandle Plot

Mounting Height - 8 Feet



Grid Lines in Units of Mounting Height

